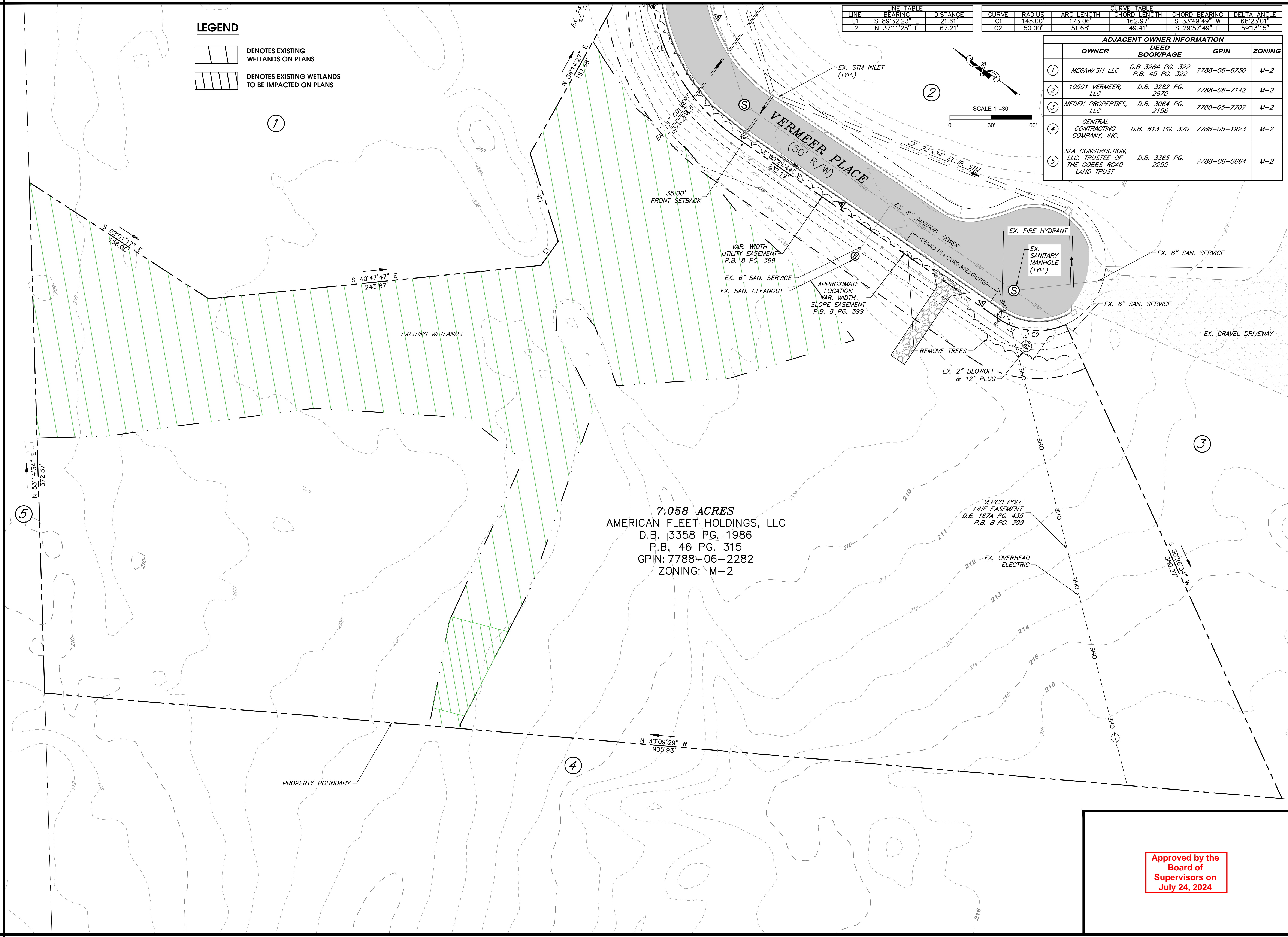


LEGEND

-  DENOTES EXISTING WETLANDS ON PLANS
-  DENOTES EXISTING WETLANDS TO BE IMPACTED ON PLANS

LINE TABLE			CURVE TABLE			
LINE	BEARING	DISTANCE	CURVE	RADIUS	ARC LENGTH	CHORD LENGTH
L1	S 89°32'23" E	21.61'	C1	145.00'	173.06'	162.97'
L2	N 37°11'25" E	67.21'	C2	50.00'	51.68'	49.41'

ADJACENT OWNER INFORMATION			
OWNER	DEED BOOK/PAGE	GPIN	ZONING
① MEGAWASH LLC	D.B. 3264 PG. 322 P.B. 45 PG. 322	7788-06-6730	M-2
② 10501 VERMEER, LLC	D.B. 3282 PG. 2670	7788-06-7142	M-2
③ MEDEK PROPERTIES, LLC	D.B. 3064 PG. 2156	7788-05-7707	M-2
④ CENTRAL CONTRACTING COMPANY, INC.	D.B. 613 PG. 320	7788-05-1923	M-2
⑤ SLA CONSTRUCTION, LLC. TRUSTEE OF THE COBBES ROAD LAND TRUST	D.B. 3365 PG. 2255	7788-06-0664	M-2



7.058 ACRES
 AMERICAN FLEET HOLDINGS, LLC
 D.B. 3358 PG. 1986
 P.B. 46 PG. 315
 GPIN: 7788-06-2282
 ZONING: M-2

Approved by the
 Board of
 Supervisors on
 July 24, 2024



OPTIMIZING YOUR DEVELOPMENT WORLD
 14207 POND CHASE PLACE | MIDLOTHIAN, VA | 23113
 TELEPHONE NO. 804.938.8864 | www.sekivsolutions.com



DATE : DECEMBER 21, 2023

REVISION BLOCK	
DATE	DESCRIPTION
3/19/2024	COUNTY COMMENTS

AMERICAN FLEET HOLDINGS, LLC
 11361 WASHINGTON HIGHWAY
 ASHLAND, VA 23005
 CONTACT: GENE NUCKOLS
 GNUCKOLS@MOROOKAAMERICAN.COM
 (804) 353-6234

**VERMEER PLACE
 VEHICULAR
 STORAGE YARD**
 ASHLAND, VA

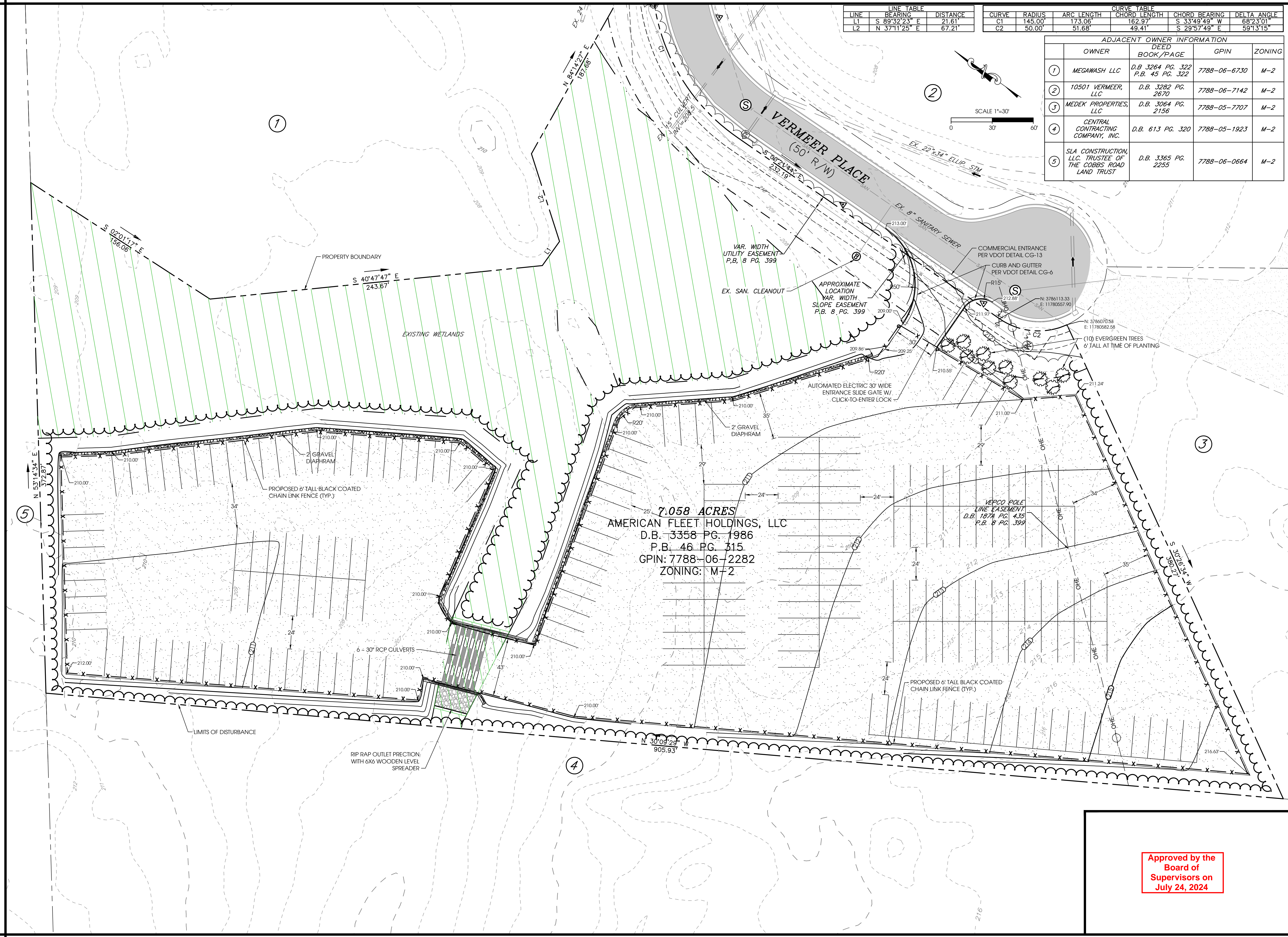
**EXISTING
 CONDITIONS
 PLAT**

SHEET NO.
C1

SCALE : AS SHOWN PROJECT NO. : 10686 PROJECT MANAGER : STUART LITTLE QUALITY ASSURANCE : STIG OWENS

LINE TABLE			CURVE TABLE					
LINE	BEARING	DISTANCE	CURVE	RADIUS	ARC LENGTH	CHORD LENGTH	CHORD BEARING	DELTA ANGLE
L1	S 89°32'23" E	21.81'	C1	145.00'	173.06'	162.97'	S 33°49'49" W	68°23'01"
L2	N 37°11'25" E	67.21'	C2	50.00'	51.68'	49.41'	S 29°57'49" E	59°13'15"

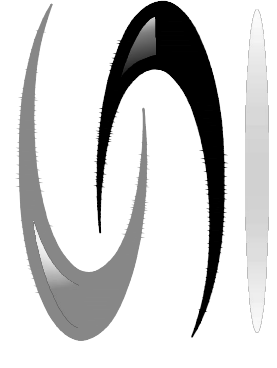
ADJACENT OWNER INFORMATION			
OWNER	DEED BOOK/PAGE	GPIN	ZONING
① MEGAWASH LLC	D.B. 3264 PG. 322 P.B. 45 PG. 322	7788-06-6730	M-2
② 10501 VERMEER, LLC	D.B. 3282 PG. 2670	7788-06-7142	M-2
③ MEDEK PROPERTIES, LLC	D.B. 3064 PG. 2156	7788-05-7707	M-2
④ CENTRAL CONTRACTING COMPANY, INC.	D.B. 613 PG. 320	7788-05-1923	M-2
⑤ SLA CONSTRUCTION, LLC, TRUSTEE OF THE COBBS ROAD LAND TRUST	D.B. 3365 PG. 2255	7788-06-0664	M-2



7.058 ACRES
AMERICAN FLEET HOLDINGS, LLC
 D.B. 3358 PG. 1986
 P.B. 46 PG. 315
 GPIN: 7788-06-2282
 ZONING: M-2

Approved by
 Board of
 Supervisors on
 July 24, 2024

seki solutions
 OPTIMIZING YOUR DEVELOPMENT WORLD
 14207 POND CHASE PLACE | MIDLOTHIAN, VA | 23113
 TELEPHONE NO. 804.938.8864 | www.sekivolutions.com



DATE: DECEMBER 21, 2023

REVISION BLOCK	
DATE	DESCRIPTION
3/19/2024	COUNTY COMMENTS

AMERICAN FLEET HOLDINGS, LLC
 11361 WASHINGTON HIGHWAY
 ASHLAND, VA 23005
 CONTACT: GENE NUCKOLS
 GNUCKOLS@MOROOKAAMERICAN.COM
 (804) 353-6234

**VERMEER PLACE
 VEHICULAR
 STORAGE YARD**
 ASHLAND, VA

SCHEMATIC PLAN

SHEET NO.
C2

SCALE: AS SHOWN PROJECT MANAGER: STUART LITTLE QUALITY ASSURANCE: STIG OWENS

